

Painted Seasons Thank You

Ann Schach

319-750-3612

kimschach@msn.com

www.stampinchic.com



Paper Measurements: Poppy Parade (4-1/4" x 11"), Whisper White cardstock (4" x 5-1/4", 3" x 2", scraps), Gold Glimmer Paper (3-3/4" x 5", 3" x 2"), Painted Seasons Designer Series Paper (Mushroom Pattern - 3-1/2" x 4-3/4"; Poppy Parade/Whisper White Dots - 3-3/4" x 2")

Instructions

1. Score the Poppy Parade cardstock at 5-1/2" to form the card base. Fold and crease using a bone folder.
2. Adhere the following panels on top of the card base as follows: Whisper White, Gold Glimmer Paper, Mushroom Designer Paper.
3. Use the Triple Banner punch to create a "V" in one end of the Poppy Parade/Whisper White Dots Designer Paper. Adhere to the card 1-3/4" from the bottom of the card.

Painted Seasons Thank You

Ann Schach

319-750-3612

kimschach@msn.com

www.stampinchic.com

4. Ink the sentiment in Poppy Parade and stamp onto Whisper White cardstock. Ink the sentiment a second time in Early Espresso, and stamp the image a second time, offsetting it slightly from the Poppy Parade image. Punch out with the Story Label Punch (available March 1st).
5. Create a second label from Gold Glimmer Paper. Cut it horizontally and adhere to the sentiment label as shown. Pop up on the card base using dimensionals.
6. Ink the frond image with Poppy Parade, stamp onto Whisper White and die cut with the matching framelit. Repeat using Mango Melody ink. Using a sponge dauber, ink the leaf image with Lemon Lime Twist and Mango Melody. Die cut with the appropriate framelit. Create two of these. Using glue dots, adhere the fronds and leaves under the edge of the sentiment, as shown.
7. Create a bow from Poppy Parade 1/2" ribbon. Adhere to the card with glue dots.
8. Accent where desired with rhinestones.



[Painted Seasons Bundle](#)

150349

Price: \$0.00



[Humming Along Cling Stamp Set](#)

148758

Price: \$20.00



[Gold Glimmer Paper](#)

146958

Price: \$5.00



[Poppy Parade 8-1/2" X 11" Cardstock](#)

119793

Price: \$8.50

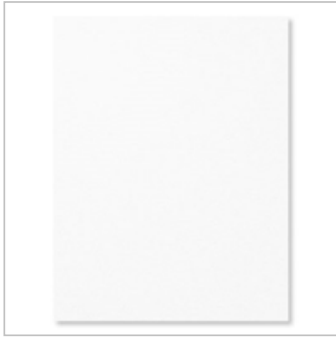
Painted Seasons Thank You

Ann Schach

319-750-3612

kimschach@msn.com

www.stampin chic.com



[Whisper White 8-1/2" X 11" Cardstock](#)

100730

Price: \$9.75



[Early Espresso Classic Stampin' Pad](#)

147114

Price: \$7.50



[Lemon Lime Twist Classic Stampin' Pad](#)

147145

Price: \$7.50



[Mango Melody Classic Stampin' Pad](#)

147093

Price: \$7.50



[Poppy Parade Classic Stampin' Pad](#)

147050

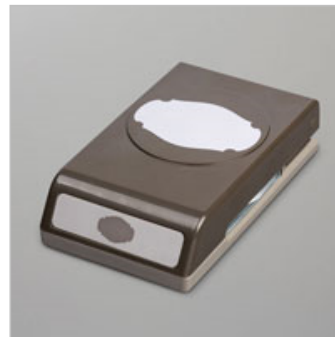
Price: \$7.50



[Big Shot](#)

143263

Price: \$110.00



[Story Label Punch](#)

150076

Price: \$18.00



[Sponge Daubers](#)

133773

Price: \$5.00

Painted Seasons Thank You

Ann Schach

319-750-3612

kimschach@msn.com

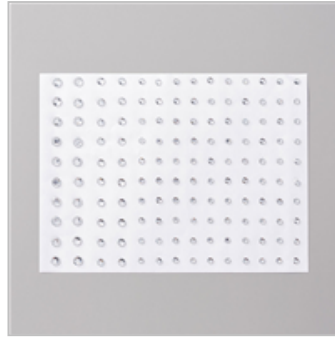
www.stampinchic.com



[Poppy Parade 1/2" \(1.3 Cm\) Textured Weave Ribbon](#)

147813

Price: \$7.50



[Rhinestone Basic Jewels](#)

144220

Price: \$5.00



[Mini Glue Dots](#)

103683

Price: \$5.25



[Snail Adhesive](#)

104332

Price: \$7.00



[Stampin' Dimensionals](#)

104430

Price: \$4.00